



School of Art

The State of the Art School

UW SCHOOL OF ART

Christopher Ozubko, Director

Division of Art Faculty

Ceramics
Doug Jeck
Akio Takamori
Jamie Walker

Fibers
Lou Cabeen
Layne Goldsmith

Metals
Mary Hu

Painting + Drawing
Riley Brewster
David Brody
Ann Gale
Philip Goyedare
Denzil Hurley
Zhi Lin
Helen O'Toole

Photography
Paul Berger
Rebecca Cummins
Ellen Garvens

Printmaking
Curt Labitcke
Shirley Scheier

Sculpture
Norman Taylor
John Young

Division of Art History Faculty

Cynthia Bogel
René Brawmann
Susan Casteras
Meredith Clausen
Patricia Failing
Christine Götter
Shih-shan Susan Huang
Anna Kartsonis
Margaret Laird
Joanne Snow-Smith
Marek Wieczorek
Robin Wright

Division of Design Faculty

Karen Cheng
Annabelle Gould
Christopher Ozubko
Axel Roesler
John Rousseau
Douglas Wadden

Auxiliary Faculty

James Nicholls
Anne Hayden Stevens
Timea Tihanyi

DXARTS Affiliated Faculty

Stephanie Andrews
Shawn Braxey

SoA Advisory Board

Gayle Barker
Gary Crevling
Madelaine Georgette
Bill Ingham
Harold Kawaguchi
Jack Kleinart
Alda Latham
Alison Millman
Bryan Ono
Elaine Ethier

GRADUATION CELEBRATION

Congratulations to the students in the class of 2005. This year the SoA Graduation Celebration was held under tents in the Arts and Sciences Quadrangle under the Japanese cherry trees. Seven hundred excited students, family members and friends gathered to honor the achievements of **357 undergraduates** and **30 graduate students** who, with hard work and a creative spirit, completed their degrees. The special graduation awards are listed below.

SCHOLARSHIPS + AWARDS

presented during Spring Quarter 2005

Significant Achievement Awards—Undergraduate Students

Erin Corrales-Diaz *Art History*, Milnora Roberts Scholarship
Alexandra Hasson *Art History*, Rollin Austin Scholarship
Eileen Lee *Visual Communication Design*, Boyer and Elizabeth Bole Gonzales Scholarship
Ashley Lyon *Ceramics*, Ruth E. Pennington Endowed Scholarship
Stephanie Pride *Visual Communication Design*, Louis and Katherine Marsh Scholarship in Art
Adam Satusek *Photography*, Milnora Roberts Scholarship

Significant Achievement Awards—Graduate Students

Susie Lee *Ceramics*, Kottler/Noritake Endowed Scholarship
Tivon Rice *Sculpture*, Boyer and Elizabeth Bole Gonzales Scholarship
Shuishan Yu *Art History*, Lloyd W. Nordstrom Art Scholarship

Special Recognition Awards—Undergraduate Students

Andrew Allen *Visual Communication Design*, Boyer and Elizabeth Bole Gonzales Scholarship
Scott Baxter *Ceramics* Milnora Roberts Scholarship
Satoko Berg *Fibers*, Boyer and Elizabeth Bole Gonzales Scholarship
Steve Carlton *Photography*, Milnora Roberts Scholarship
Amber Cash *Photography*, Milnora Roberts Scholarship
Jennifer Chen *Painting + Drawing*, Boyer and Elizabeth Bole Gonzales Scholarship
Sara DeAraujo *Visual Communication Design*, Milnora Roberts Scholarship
Sarah Frazier *Painting + Drawing*, Milnora Roberts Scholarship
Josh Froscheiser *Visual Communication Design*, Milnora Roberts Scholarship
Thomas Ham *Visual Communication Design*, Milnora Roberts Scholarship
Sarah Hollingsworth *Photography*, Milnora Roberts Scholarship
Jennifer Jenkins *Painting + Drawing*, Milnora Roberts Scholarship
Lauren Klenow *Art History/IVA*, Boyer and Elizabeth Bole Gonzales Scholarship
Aimee Meyer *Art History*, Milnora Roberts Scholarship
Damian Puggelli *Painting + Drawing*, Milnora Roberts Scholarship
Alda Tchochiev *Painting + Drawing*, Milnora Roberts Scholarship
Gretchen Van Dyke-Donahe *Painting + Drawing*, Milnora Roberts Scholarship
Sarah Wood *Painting + Drawing*, Milnora Roberts Scholarship
Jasmine Zimmerman *Ceramics*, Milnora Roberts Scholarship

Special Recognition Awards—Graduate Students

Suzanne Beal *Art History*, Parnassus Endowment Scholarship
Steven Bunn *Art History*, Parnassus Endowment Scholarship
Michael Ceyress *Fibers*, Boyer and Elizabeth Bole Gonzales Scholarship
Gayle Clemans *Art History*, Lloyd W. Nordstrom Art Scholarship
Timothy Fair *Visual Communication Design*, Boyer and Elizabeth Bole Gonzales Scholarship
Kyle Griffith *Art History*, Parnassus Endowment Scholarship
Andrea Hull *Ceramics*, Boyer and Elizabeth Bole Gonzales Scholarship
Molly Malecki *Art History*, Lloyd W. Nordstrom Art Scholarship
Matthew Mitros *Ceramics*, Louis and Katherine Marsh Scholarship in Art
Stephanie Pierce *Painting + Drawing*, Boyer and Elizabeth Bole Gonzales Scholarship
Anne Saliceti-Collins *Art History*, Thelma I. Pell Endowed Scholarship
Carrie Scott *Art History*, Lloyd W. Nordstrom Art Scholarship
Nancy Stoaks *Art History*, Lloyd W. Nordstrom Art Scholarship
Kimberly Trowbridge *Painting + Drawing*, Boyer and Elizabeth Bole Gonzales Scholarship
Chang-Ling Wu *Visual Communication Design*, Boyer and Elizabeth Bole Gonzales Scholarship

Art History Research Awards—Graduate Students

Catherine Barrett, Lloyd W. Nordstrom Art Scholarship
Suzanne Breidenbach, Lloyd W. Nordstrom Art Scholarship
Carrie Scott, Lloyd W. Nordstrom Art Scholarship
Shuishan Yu, Lloyd W. Nordstrom Art Scholarship

Graduating with Excellence Awards—Undergraduate Students

Tamar Benzikry *Art History*, Thelma I Pell Award
Kyung Jim Chun *Visual Communication Design*, Boyer and Elizabeth Gonzales Award (shared)
Theresa Lee *Industrial Design*, Boyer and Elizabeth Gonzales Award (shared)
Eli Steurich *Sculpture*, Olive F Lockitch Award

Graduating with Excellence Awards—Graduate Students

Tamaki Maeda *Art History*, Parnassus Award (shared)
John Szostak *Art History*, Parnassus Award (shared)
Frank Burton *Photography*, Doris Chase Award

Excellence in Teaching

Jen Moore *Visual Communication Design*, Boyer and Elizabeth Gonzales Award
Kolya Rice *Art History*, Jeannette C. Killian Award

Director's Award for Exceptional Contributions by a Graduate or Undergraduate

Maurice Woods *Visual Communication Design*



Notes from the Director

As you read this edition of *Artifacts*, you will come across a number of articles regarding change and transition. At the University level, Phyllis Wise has been named the new Provost. Dr. Wise comes from the University of California, Davis, and started on 01 August. Within the College of Arts and Sciences, Divisional Dean of Arts and Humanities, Michael Halleran, has departed to the University of Miami to take on the significant role of Dean of the College of Arts and Sciences; he has been replaced by Ellen Kaisse, Professor of Linguistics, who is our immediate contact to the College. Other administrators on campus that have relationships to the School of Art are the new Dean and Associate Dean of the Graduate School (Suzanne Ortega and Melissa Austin, respectively). Dean and Vice Provost of Undergraduate Education, George Bridges, has left that position and is being replaced by Dr. Christine Ingebritsen for the upcoming year. There are searches elsewhere on campus for deans of the College of Architecture and Urban Planning and the Information School (the iSchool), and other deans have been recently appointed in other units.

Within the School of Art you will read about the departure of Dan Loewenstein *Sculpture* to pursue his own work, and Louise St. Pierre's *Industrial Design* move to Vancouver, BC. During Spring Quarter we had a special surprise celebration for retiring Professor of Sculpture, Norman Taylor, who is ending thirty-seven years of teaching for the School. Professor Taylor will retire at the end of Autumn Quarter. We wish him, Dan and Louise all the best in their future projects. On a bright note, the Division of Design welcomes a new member to its faculty this autumn, Assistant Professor Axel Roesler, who will lead Interaction Design, a new direction in the Design curriculum being introduced this year.

Sadly, I must say that four major icons of the art community passed away but are leaving a legacy behind for future generations: Gwendolyn Knight Lawrence, Everett du Pen, LaMar Harrington, and Ramona Solberg. On 08 August I had the privilege of acknowledging Professor Solberg and the vast contributions she made to teaching during her many years at the University. Her memorial service took place at the Bellevue Art Museum in front of a jam-packed gathering of her friends, family, past students, and colleagues who came to celebrate her life. Although the passing of each of these individuals will be greatly felt, I was extremely exalted by the show of collective support to continue the spirit of art-making that was expressed in the comments at Ramona's service. As the University, College and School transition into a new era, I invite you to be a part of our vibrant and expanding community.

Christopher Ozubko
Director
UW School of Art

In this issue:

- SoA Alumni / Emeritus / Staff Gifts Benefit Students & Facilities
- Alumni Spotlight: Anne Traver
- Scholarships for Scholars VI
- Open House
- In Memoriam

<http://art.washington.edu>



SUPPORT!
THE UW SCHOOL OF
ART



Faculty, Staff + Student notes

Cynthia Bogel Assistant Professor, Art History received a Getty Collaborative Grant for 2005-07 to research Buddhist texts and ritual objects imported from China to Japan in 806 AD; her collaborators are Eugene Wang (Harvard University, Chinese Buddhist art) and Ian Astley (University of Edinburgh, Buddhist studies). In spring 2005 she received a UW Royalty Research Scholars award, and she published a review essay in *Japanese Religions* (June 2005). With a curriculum development grant from the UW East Asia Center, she'll offer a seminar in Autumn Quarter 2005 on gender and difference in Japanese arts and cultures.

Deborah Caplow Lecturer, Art History wrote a catalog essay, "A Brief and Partial History of Political Art and Printmaking," for the *Paper Politics* exhibition catalog during Spring Quarter 2005. She also gave a talk to Seattle Print Arts, the exhibit sponsor, on the same subject.

Francis Celentano Professor Emeritus, Painting + Drawing had a one-man show at Bryan Ohno Gallery, Seattle, from 13 January to 26 February 2005.

Mike Cress MFA Candidate, Fibers and Camille Slack '05 had work featured in the April/May 2005 issue of *Fiberarts*. The article was titled "The Future of Fiber Art: a sampling of student work."

Meredith Clausen Professor, Art History was selected as one of four Fellows at the Institute for Scholars at Reid Hall in Paris, France, an institution supported by Columbia University. She is spending Autumn Quarter 2005 there to do research on the Montparnasse Tower. Her Cities and Buildings Database (<http://content.lib.washington.edu/buildingsweb/>) was written up in the 01 April 2005 *Scout Report*, which is published weekly by the Internet Scout Project. The description may be seen at: <http://scout.wisc.edu/Reports/ScoutReport2005/scout-050401-re.php#7>.

Ellen Garvens Associate Professor, Photography taught the UW Summer Institute 2005 with colleagues from English and Comparative History of Ideas. The theme this year was "Becoming Strangers: Travel, Trust, and Collaboration." More information is available at <http://www.washington.edu/research/urp/sinst/inst2005/>.

Margaret (Peg) Laird Assistant Professor, Art History was awarded a Getty Postdoctoral Fellowship for the 2005-06 academic year and a travel grant from Gladys Kriebel Delmas Foundation. Caroline Houser, Professor of Art, Smith College is teaching Laird's Art History 201: Survey of Western Art—Ancient during Autumn 2005.

Zhi Lin Associate Professor, Painting + Drawing had a body of work featured at Art Chicago 2005 by the Koplin Del Rio Gallery. His work was reviewed by Alan Rater, art critic for *The Chicago Tribune*.

Norman Lundin Professor Emeritus, Painting + Drawing had a show titled *Views Out A Window & Other Paintings* at Koplin Del Rio Gallery, West Hollywood, from 16 April through 28 May 2005.

James McMurray Instructional Technician, Metals was appointed co-chair of the Rapid Manufacturing Educational Committee of the Society of Manufacturing Engineers and participated in a panel discussion at the Rapid 2005 conference in Dearborn, MI, in May.

Anno Salicetti-Collins MA Student, Art History was named the Dean's Medalist in the Arts in spring 2005. An article about the Dean's Medalists is at <http://www.artsci.washington.edu/newsletter/summer05/WhatsNews.htm#deansmedal>.

Michael Spafford Professor Emeritus, Painting + Drawing showed his *Iliad* Series of prints at Francine Seders Gallery, Seattle, during February 2005.

Jamie Walker Professor, Ceramics exhibited new work at William Traver Gallery, Seattle, during April 2005.

Metal Collaborations

One of twelve college programs spotlighted at the College of Arts and Science's Celebration of Distinction on 17 May was the Metals Program's collaborative research projects with medical staff at **Children's Hospital**. A group of undergraduate students are working with **Mary Hu** Professor, Metals, two audiologists at Children's and three teenage patients to re-design the aesthetics, comfort and placement of the Bone Conduction Hearing Aid. In addition, **James McMurray** Instructional Technician, Metals is working with plastic surgeon Richard Hopper of Children's to use CT Scan data to digitally print out three-dimensional models of children's skulls to facilitate pre-operative planning.

SoA OPEN HOUSE

This year's Open House had record attendance. Two thousand friends, alumni, prospective students, and visitors participated in the sales, auctions, exhibits, demonstrations, open classrooms, and receptions that were part of the event. Mark your calendars for **Friday 28 April 2006** when the SoA will once again join with Music, Dance, Drama, DXARTS, and the Alumni Association's Washington Weekend to hold our annual open house.



SoA ALUMNI/EMERITUS/STAFF Gifts benefit students & facilities

The faculty, students and staff of the SoA would like to convey their thanks for all of the gifts the School, its programs and students receive from alumni, friends and emeritus faculty on an annual basis. During the past year alone the SoA received \$1.2 million in gifts. Although the majority of these gifts go directly to students in the form of scholarships, we have seen an increase in the amount of gifts that directly benefit programs, something that is becoming increasingly necessary in today's economic climate. Not surprisingly, gifts from alumni and former faculty accounted for 75% of the total gifts received last year. That's a lot of support! Moreover, it sends a clear signal to the School that we are offering a top-notch education that many are dedicated to preserving and continuing. We would like to highlight some of the School's most significant recent gifts:

In November 2003, **Henry Deposit** (BFA '87) and **Janine Ipsen** (BFA '85) made a **\$10,000 gift** to the **Sculpture Program** to purchase much needed metal and wood fabrication equipment. Both Henry and Janine are sculptors working primarily in wood and wished to help out the program they worked with as students. They stated: "Our experiences as students with the School of Art and the Sculpture Department, in particular, were very special to us and we reflect upon them often. We decided to see what the current needs were and attempt to help out in some small way."

A name familiar to many people in the Northwest arts community, the late **Ramona Solberg** (BA '51, MFA '58, Professor Emeritus, Metals), showed her continued dedication to the **Metals Program** and its students by donating **\$5,000** to purchase a Cavallin SRM 65 power rolling mill. Students experimenting with *mokume gane*, casting their own specialty alloys or re-claiming scrap metals can now more easily roll down their ingots into usable sheet or wire form.

In late October 2004, **Frederick M. Johnson** (BFA '53, MFA '54) invested **\$10,000** in the **Art Slide Library Fund** to help in the process of the **digitization** of the School's collection of 340,000 slides. Fred read about the Slide Library's current initiative to build and maintain a digital image database in *Artifacts* (Autumn 2004) and wanted to help bring the library and its technology up-to-date, as well as continue to expand the library's collection so that it could continue to be a valuable resource for faculty and students.

In March 2005, renowned painter **Bill Ingham** (MFA '72) and his wife, **Ruth**, gave a generous gift that allowed the purchase of a photo exposure unit that benefited the **Printmaking and Fibers Programs**. The unit allows students to make printing plates and negatives for use in pulling prints and printing images on fabrics. When asked about his motivation for the gift, Bill responded that he wished to make an immediate impact on the School and believed this was an excellent opportunity to fill in a gap left vacant by declining state support.

Most recently, in July 2005, **Patti Warashina** (BFA '62, MFA '64, Professor Emeritus, Ceramics) graciously gave **\$5,000** to endow the **Sperry/Warashina Fellowship in Ceramics**. This fellowship directly benefits Ceramics students in the form of financial awards. The University matched her gift in the amount of \$5,000 through the **Faculty-Staff-Retiree Campaign for Students** program which allows current and former faculty and staff to double the amount of their gifts through 1:1 matching up to \$10,000. An additional \$1,000 was added to Patti's gift by the College of Arts and Sciences via the **College Graduate Student Matching Program** for contributions from faculty and staff to graduate student support. In all, Patti's gift amounted to \$11,000.

Also in July, **Charles W. Smith** Professor Emeritus, Sculpture and **Val Welman** Associate Professor Emeritus, Sculpture each made substantial gifts of equipment and in-kind material to the **Sculpture Program**. Each gift was valued at more than \$3,000 and will benefit numerous students in years to come.

In a final note, the School wishes to recognize one of its most outstanding and consistent contributors: **MaryEllen Anderson** Program Coordinator, Art History. She has been giving to the **Art School Awards Fund**, which goes towards student scholarships, since 1990. Her consistent giving is a testimony to her belief in what the School and its faculty are doing.

Gifts such as these allow the School to continue offering a stellar education for the nation's future artists, designers and art historians; but truly, every gift counts. Thanks to all of those individuals and companies who have supported and continue to support the School and its goals.

School of Art

ARTIFACTS

Autumn 2005



KUDOS TO CERAMICS

The **Ceramics Program** was recently awarded one of three **UW Brotman Instructional Awards**, which "recognize collaboration within and among departments, programs and groups that improves the quality of undergraduate education." This award will bring the program **\$11,500**. Congratulations to the three faculty—Doug Jeck, Akio Takamori and Jamie Walker—whose collaborative work made them winners! An article about the Ceramics Program is at <http://www.uwnews.org/Uwnews/sites/Awards2005/index.asp?id=2827>. In addition to this honor, the Ceramics Program MFA curriculum was once again **ranked third in the nation** by *US News & World Report*.



SCHOLARSHIPS for SCHOLARS

The **Scholarships for Scholars VI** Celebration will be held in **February 2006**, with a raffle featuring the work of the late Professor **Robert Sperry** and an exhibition by the first-year Ceramics graduate students. The annual fundraiser provides scholarships for the Ceramics graduate students and **has raised over \$80,000**. Last year Professor Emeritus Patti Warashina drew the winning raffle ticket to the delight of Aida and Christopher Latham, who took home a set of plates from the Last Supper series created by the late Professor Howard Kottler. Thank you to all who participated, and please visit: <http://depts.washington.edu/teapot/> for more information. You also may contact Kris Jones *SoA Administrator* (206.685.2552, ksjones@u.washington.edu) or Jamie Walker *Professor, Ceramics* (206.543.7179, jwalk@u.washington.edu).

SUPPORT!
THE UW SCHOOL OF
ART

IN MEMORIAM

Four well-known members of the Seattle and Bellevue arts communities passed away during spring 2005. We mourn their loss and wish their families well during the months ahead. The obituaries mentioned below can be found by searching at the following web addresses: *Seattle Post-Intelligencer*, <http://seattlepi.nwsource.com/obits/>; *Seattle Times*, <http://archives.seattletimes.nwsource.com/web>.

Gwendolyn Knight Lawrence, artist and spouse of the late Jacob Lawrence Professor Emeritus, Painting passed away on 18 February 2005 at the age of 91. Her *Seattle Times* obituary was published 19 February 2005, and the *Seattle Post-Intelligencer* obituary was published the same day.

LaMar Harrington '79, former Associate Director of the Henry Art Gallery and one-time Director of the Bellevue Art Museum, passed away on 23 March 2005 at the age of 87. Her *Seattle Times* obituary was published 26 March 2005, and the *Seattle Post-Intelligencer* obituary was published 30 March 2005.

Everett DuPen Professor Emeritus, Sculpture passed away on 25 May 2005 at the age of 92. His *Seattle Times* obituary was published 10 June 2005, and the *Seattle Post-Intelligencer* obituary was published 13 June 2005.

Ramona Solberg '51, '58 Professor Emeritus, Metals passed away on 13 June 2005 at the age of 84. Her *Seattle Times* obituary was published 16 June 2005, and the *Seattle Post-Intelligencer* obituary was published the same day. Donations may be sent to: Ramona Solberg Scholarship, Lambda Rho Art Alumni Assoc., University of Washington, Box 353440, Seattle, WA 98195-3440.



In the news

An article about a Winter Quarter 2005 **Metals Program** class on **toolmaking**, taught by visiting artist Robert Shaw, appeared in *A&S Perspectives*: <http://www.artsci.washington.edu/newsletter/WinterSpring05/WhatsNew.s.htm#tools>.

Sculpture and Public Art students were commissioned to create artworks for **University Avenue light poles**; the works were installed in March 2005. A 23 March article in the *Seattle Post-Intelligencer* titled "Student art adds spirit and sparkle to the Ave" describes the project: http://seattlepi.nwsource.com/local/217159_ncenter23.htm. Another article about this project appeared in *A&S Perspectives*: <http://www.artsci.washington.edu/newsletter/summer05/WhatsNews.htm#publicart>.

The **Touching Art exhibit**, which was at the Jacob Lawrence Gallery during June and July, received a review in the 20 June 2005 edition of the *Seattle Times*: <http://archives.seattletimes.nwsource.com/cgi-bin/texis.cgi/web/vortex/display?slug=blind20&date=20050620>.

The show also was featured in a 28 June story on KOMO-TV with reporter John Sharify.

An article in the 23 June 2005 edition of *University Week*, titled "**Working together for art**," tells the story of a new public art piece on campus that was created by a group of students, led by John Young Professor *Sculpture*, responding to the theme of diversity. The article, including a number of photographs, is available at http://admin.urel.washington.edu/uweek/archives/issue/Auweek_story_small.asp?id=2883.



ROMA REPORTA

Christopher Ozubko Professor, *Visual Communication Design (VCD)* was in Rome with fourteen students (three graduate and eleven undergraduate) from 22 August through 22 September 2005 on the first SoA Rome Program to focus exclusively on VCD. **Lisa Schultz '03** taught an art history class for the students. In addition to their studies in Rome, the group visited the marble quarries at Carrara and the Museo Bodoniano in Parma. Information about this program is available at <http://courses.washington.edu/dsgnroma/>.

The Studio Art Program in Rome was cancelled for 2005–06, but one is being planned for the next academic year. Art History will have a Rome Program in Spring 2006, and it will be led by **Christine Göttler** Associate Professor, *Art History*.



Alumni Spotlight: Anne Traver

A 1975 SoA graphic design graduate, Anne Traver has stayed involved with the School ever since as a visiting lecturer, on committees and as a part-time faculty member. She has led a successful career as a designer, creative director and brand consultant, with hundreds of design awards and work published in the leading design publications. Anne is currently one of three partners of Methodologie, a nationally recognized brand and design firm in Seattle, with clients ranging from the Bill and Melinda Gates Foundation, to Boeing, to UW Press.

A leader throughout her career in both the art and design communities, Anne has served as President of the Seattle Chapter of the American Institute of Graphic Arts (AIGA) and on boards throughout the arts community, at museums, galleries, and groups such as Artist Trust. In 2002 Anne was awarded the prestigious AIGA Fellow Award for her significant contributions to the profession.

TRANSITIONS

Dan Loewenstein Assistant Professor, *Sculpture* has left the SoA to focus on his own creative work.



Axel Roesler Assistant Professor, *Design* comes to the SoA from The Ohio State University where he earned an MFA in Industrial Design and a PhD in Human-Centered Design. He also holds a Diplom in Industrial Design (equivalent to a MA) from Burg Giebichenstein, Hochschule für Kunst und Design, Halle, Germany, his home country. While at The Ohio State

University, Axel was a designer and researcher at the Cognitive Systems Engineering Laboratory (C/S/E/L), Institute of Ergonomics. His research interests are time-based and point-of-view-dependent aspects in design, such as visual exploration, storytelling in design and the role of perspectives in design collaboration across different types of expertise. As a designer in a team of psychologists, computer scientists and field researchers at C/S/E/L, he explored innovations at the intersection of people and technology, and he has worked with sponsors such as NASA, ARL, NSA, and NSF.

Louise St. Pierre Associate Professor, *Industrial Design* has departed the SoA to take a position in the Industrial Design Program at the Emily Carr Institute of Art & Design in Vancouver, BC.

Norman Taylor Professor, *Sculpture* will be retiring after 37 years of teaching sculpture at the SoA. An avid scuba diver, we're sure he has many dives planned in the future. We wish the best of luck to one of the School's most dedicated graduate mentors—he leaves behind large molds to fill in the casting studio.

MFA THESIS EXHIBITION 2005

Henry Art Gallery

Autumn + Winter EVENTS '05-'06

Events are free and open to all unless otherwise noted.

Check the SoA's *Calendar of Events* online at <http://art.washington.edu> for additional events.

For more information about any of our events, please email artvents@art.washington.edu.

AUTUMN 2005

05 – 15 October

Recent Work | Riley Brawster

Opening reception: **Tuesday 04 October, 4–6pm**

Jacob Lawrence Gallery, 132 Art Building

Assistant Professor of Painting + Drawing exhibits his recent work. Gallery Hours: Tuesday – Saturday, 12–4pm. For more information please call 206.685.1805.

25 October – 12 November

Construction Site | 1st Annual Alumni Exhibition

Jacob Lawrence Gallery, 132 Art Building

Invitational exhibit of work by SoA alumni Leo Berk '99, Margie Livingston '99 & Robert Yoder '87.

Artist Panel Discussion @ the Henry Art Gallery, Thursday

27 October, 6.30pm; Reception to follow at the Jacob Lawrence Gallery

Gallery Hours: Tuesday – Saturday, 12–4pm. For more information please call 206.685.1805.

30 November – 10 December

Works on Paper + Small 3-D

Opening reception: **Tuesday 29 November, 4–6pm**

Jacob Lawrence Gallery, 132 Art Building

Juried exhibition of SoA undergraduate and graduate artists.

Gallery Hours: Tuesday – Saturday, 12–4pm. For more information please call 206.685.1805.

WINTER 2006

11 – 21 January

Works in Progress | 1st Year Master of Fine Arts

Opening reception: **Tuesday 10 January, 4–6pm**

Jacob Lawrence Gallery, 132 Art Building

Group exhibition of work by MFA candidates from the areas of ceramics, fibers, metals, painting + drawing, photography, printmaking, sculpture, and visual communication design.

Gallery Hours: Tuesday – Saturday, 12–4pm. For more information please call 206.685.1805.

01 – 18 February

School of Art 'OPEN' 2006

Opening reception: **Tuesday 31 January, 4–6pm**

Jacob Lawrence Gallery, 132 Art Building

Juried exhibition of work by SoA undergraduate artists.

Gallery Hours: Tuesday – Saturday, 12–4pm. For more information please call 206.685.1805.

08 March – 01 April

closed 20 – 25 March for Spring Break

Digital Media 2006

Opening reception: **Tuesday 07 March, 4–6pm**

Jacob Lawrence Gallery, 132 Art Building

Juried exhibition of visual and sound works by SoA and Digital Arts and Experimental Media (DXARTS) students.

Gallery Hours: Tuesday – Saturday, 12–4pm. For more information please call 206.685.1805.

SUPPORT!
THE UW SCHOOL OF
ART

Mailing List

As we said in the last *Artifacts*, the SoA could no longer afford to maintain a newsletter mailing list of over 10,000 names. Our current list contains **approximately 2,000 names**, which includes SoA donors since 1990, parents of current students and people who sent in the envelope enclosed in the last newsletter. If you know of someone who would like to receive the newsletter, please give them the envelope from your newsletter or have them contact Lynn Bazarnic at 206.685.2442 or bazarnic@u.washington.edu. We are strongly encouraging a donation of \$10/year to support the newsletter.

How did your education prepare you for a career in design?

My education instilled the high design standards that have been central to my design practice. The career stuff I had to learn on the job.

Did you come up against any barriers being a woman entering a primarily male-dominated field?

The design field is not really a male dominated field. Even in the '70s I think the presence of women was accepted and certainly not a novelty. However, in some client settings I certainly experienced situations where, especially as a young woman, I felt like I had to muster up every shred of courage and self-confidence I could to be persuasive and credible. It is not enough to do good work; you must be able to persuade others of the value of your work.

How has the field of design changed since you graduated?

When I started, my concern as a designer was primarily aesthetic—to provide the best visual solution. Now designers are in a position to provide guidance to our clients on a more strategic level. Design can be a powerful tool for bringing a business strategy or a public service communications strategy to life. I have found that it is far more rewarding to use the skills we have as designers to create understanding, change minds, motivate behavior or provide order, than it is to provide a pleasing

layout. This means taking that visual innovation we love and putting it to work for a purpose.

It's a good thing that roles for designers are expanding, because some of the traditional roles are disappearing. The easy accessibility of technology tools to practically anyone means that the demand for designers to provide just a pleasing layout is pretty slim. The delayed impact of the "desktop publishing" revolution is now truly visible. Most organizations have someone who is reasonably competent, in spite of no design training, at creating a brochure or even designing a website. Client expectations for professionalism and quality in everyday corporate communications—sales sheets, product brochures, power point presentations, etc.—have become very low and often these amateur efforts are considered good enough in many organizations.

The design profession needs to deal with this reality. A beautiful embossed letterhead on 100% cotton paper was once the showpiece of a corporate identity system—now it is a minor indulgence. Far more people will see the internally produced fact sheet—and they'll see it as a PDF on their office computer, with whatever color limitations their monitor has, or they will print it out on their office printer. There is a real opportunity for the next generation of graphic designers to develop a new world of design solutions that succeed in the context of these real world limitations.

Are the students you have employed in your design firm prepared to succeed in this evolving profession?

Of course, a highly developed design sensibility, originality and refined form-making skills are absolutely essential, as always. The School of Art's VCD students are exceptionally well prepared in this regard. The additional characteristics to succeed now are a keen intelligence, a broad cross-disciplinary education, inquisitiveness, an abiding curiosity about the world beyond design. The students most likely to have these qualities have broad interests, read widely, experience widely. The University of Washington is a wonderful laboratory for cultivating these qualities from motivated students. But you can't get it all in school, and you certainly can't get it all in a design class.

How has teaching at the SoA made a difference in your own design career?

Teaching is hard work but it is energizing. My time in the classroom keeps me exposed to new points of view, to fresher, younger sensibilities, and to all that youthful passion and purpose. And trying to offer meaningful critiques to 22 students in 3 hours is great training for quickly communicating about design outside the classroom.

Submission deadline
for next newsletter:
13 January 2006

DONOR APPRECIATION LIST

01 January to 30 June 2005

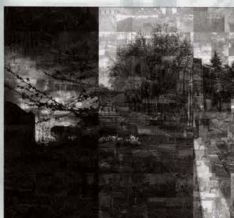
The SoA would like to recognize and thank our donors. Without the private support of our alumni and friends, the SoA would be unable to sustain many of its current activities. Their valuable gifts directly benefit our students, individual programs and general operations. Even the production of this newsletter would be impossible without help from our friends. We appreciate our donors' continued support of the arts and hope that the School continues to earn their respect.

Donor Recognition Levels

- Friend: \$1 - \$999
- Patron: \$1,000 - \$9,999
- Benefactor: \$10,000 +

HUB PROMOTES STUDENT WORK

The Husky Union Building's Permanent Art Collection is setting aside \$3,000 annually as a Director's Award for the purchase of SoA student work from the BFA and MFA shows. Their collection currently includes the work of John Burket '01, Madeline Georgette '97, Richard Johnson '01, '03, Kamla Kakaria '98, Shin Kimura '99, Tova Peterson '00, Rebecca Smurr '95, and Joni Marie Theodorsen '98.



Ken Turner '91 was the finalist for the competition to create a work titled *A Day in the Life of the University of Washington*, which was funded by John Buller, Executive Director of the UW Alumni Association. His five-panel mural is on display in three locations: Bank of America Arena, The Student Union Building (main floor), and the Fireplace Room at the UW Alumni Association.

FRIENDS

Richard S. Adatto and Sallie Reynolds
 Merrisa Aede
 Steve and Eric Adman
 Advantix, Inc.
 Diana H. Alm and Daniel J. Holland
 Dyan F. and Tom G. Alkre
 Hilda L. Alum
 Marcien Anderson
 Neil W. Anderson
 Andi Are
 Susan M. Babcock
 Charles and Nancy Bagley
 Sylvia Ballin
 Gall J. and Ronald V. Barker
 Elizabeth A. Beemster and James B. Levensen
 Lisa A. Bellerio
 Amy L. and Robert O. Bergelin
 Lanny M. Berger
 Sharon K. Birzer and Michael Rubin
 David W. and Nancy J. Bishop
 Julie M. Blakemore-Quessell
 Michael J. and Virginia A. Bilven
 Shirley J. Boggs
 Maria J. Bottemiller
 Lindsay T. Bradley
 Kimberley P. and Lee W. Brillhart
 Olivia M. Britt
 Carol J. H. and W. Carl Buchan
 Pamela L. Buesing
 Karen A. Bush
 Anne and Steven Caffery
 Judith E.J. Caldwell
 Andrew L. and Sheila M. Campbell
 Jerry L. Campbell and Prof. John Adams
 G. Camponico and Elke Peterson
 Teresa Capp and John Wiley
 Beth Ann Lee Carlson
 Chelsea D. Case
 Mary Ann and Thomas D. Case
 Mary Ann and Robert Casey
 Helene Cassared
 Joan Hixon Cates and Judson DeWitt Cates
 Daniel O. Causey, II
 Shiriae Cheng

Randall T. Choo
 Coleen S. Choquette and Dan T. Powell
 Nancy J. and Ronald H. Clark
 Bonnie J. and Philip R. Coliner
 Robert Cornell
 Susan and Ken Sparks
 Karen Shigem Cook and D. Keith Cook
 Kenyon P. and Abigail I. Cooke
 Stephanie J. Cooper
 Leslie J. and Michael Creighton
 Jackie A. Cuddy
 Nancy Current and Jay Wang
 Lovella Y. and Mark J. Damberg
 Beth Ann and John C. Daynes
 Katrina L. Dienes
 Lisa A. Den Beste
 Ellen Dissanayake
 Stephanie D. and Ralph G. Doll
 Jeffrey Lynn and Frank Duran
 Gretchen M. Enders
 Dennis E. Evans and Nancy Mee
 Edith Holland Farhall
 Pamela J. Farina
 Amiy K. Femsa
 Fred Onco, Inc.
 Nancy and Scarlett Foster-Moss
 Frances Allen & Co.
 Ann G. Friedman and T. Johnston
 Barbara J. Freeman
 Sharon F. Frucci
 William A. Gallicci
 The Gap Foundation
 Madeline S. Georgette
 Jules K. Gin
 Christina M. Gimin
 Jennifer A. Greco
 Kathryn Troup Greenberg and Albert G. Greenberg
 Matthew J. and Sonya L. Grier
 Bethal J. Gutscher
 Cheryl H. Hahn
 Emily L. Halvorsen
 Gail M. Hammar
 Lisa R. Hanson
 Peter A. Hartley
 Hephaestium

Catherine E. Hillenbrand and Joseph S. Hudson
 Kathryn H. and Warren H. Hodges
 Jacqueline L. Hoekstra
 Christine Hoggar and Victor Oblas
 Leonard D. and Louise E. Hudson
 Susan Hughes-Hayton and Robert Hayton
 Kelly J. Humphries
 Lowell D. King
 IPC
 Catherine Isaeff
 Marla R. Jacobs
 Starla K. Johnson
 Deborah L. Jones
 Jo Ann and Theodore Jonson
 Ted Jonsson
 Jeffrey S. Kalin
 Thomas B. and Gail B. Kass
 Rita E. Keizer
 Cynthia L. Kenner
 Julie M. and Donald C. Kirk
 Ramon R. Klein and Sarah Divdar-Saadi
 Eise M. Kiewer
 Kristi J. Knowles
 Kerry Koop
 Sharon G. Krachniss and Michael J. Bolger
 Kathryn Hills Krafft and Chapin Krafft
 April Kulp
 Yvonne C. Kunz
 Mariko Kurozaka
 Kristina LaCrosse
 Thu A. Le
 Marilyn K. Lemar
 Emily J. Leaver
 Heather MacPherson
 Robert R. Maki
 Roger D. Malone
 Joan E. Mann
 James K. Marzander
 James K. Marshall, Jr.
 Beverly M. and Douglas W. McArthur
 Patti F. and Noel Mckeethan
 Maria K. Merendino
 Nancy J. and Joseph H. Miller
 Apollo K. Thompson
 Diane M. Morgan
 Arnye T.O. and Keith W. Morkawa

Akihito Morino
 Peter H. Mumford
 M.J. Murdoch Charitable Trust
 Meela M. and Thomas I. Naylor
 Iris J. and David G. Nichols
 Melinda N. Perrigo
 Marise F. and Randy L. Person
 Charles N. and Kathleen B. Petty
 Sengora Prounsavan
 Susan K. Plain
 Suzanne D. Powers
 Edward and Anne Praczukowski
 Barbara J. and Ray Prentice
 Kelli D. Radcliffe
 Erik R. Reel
 Reuben and Tille Reifler Charitable
 Remainder Trust (Burton V. Reifer, trustee)
 Christopher and Angelika Rhoades
 Ann M. Roberts
 Sasha F. and Robinson
 Lynda K. Rockwood
 Caroline M.C. and Richard M. Rose
 Tammie R. Rubin
 Jill E. Rullkötter and Bill Hurley
 Pamela J. Sachant
 Masahiko Sakaguchi
 Katherine James-Schuttemaker and John P. Schuttemaker
 Karen G. Sebastian
 Kristina A. Sever
 Shunya Y. Sessa
 Margaret A. Siemon
 Patrice and Ed Sims
 Kathleen N. Sweets
 Anna C. Smith
 Kathleen E. Stillwater
 Ken and Loretta Story
 F. Elaine and Richard Sutton
 SWL & J Wood Products
 Teresa Tamura
 Michele K. Thibeault
 Heather G. Thigpen
 Janet S. Thomas
 Linda L. M. Thomas
 Andra L. Thorne
 Laura C. Thorne
 Three Mothers Design

Time Warner, Inc.
 Jennifer L. Towner
 Sarah N. and Lawrence E. Trimble
 Leah J. and Henry E. Turner
 Carol and Charles Twiss
 Kay and Frank Tylla
 United Way of King County
 University Book Store
 Edith M. Vandenberg
 Willem and Diane Volkertz
 The Washington Mutual Foundation
 Margaret A. Watson and Paul B. Brown
 Jerrisa and Vreza Katt
 Eva S. Westerling
 Susan C. and W. Loren Williams
 Christina P. Wilson
 Randall Knight Wirum
 Jan L. Wilcraft
 Glenn M. Yamahara
 Carleen A. and William R. Yates
 Robert E. Yoder
 Jennifer L. Zwick

PATRONS
 Donald L. and Robert C. Anderson
 The Boeing Company
 Gene B. and Elizabeth E. Brandzel
 Caroline C. and David W. Browne
 Cheryl L. Buck
 Linda B. and John Chaplin
 Nancy A. Ciarnowski
 Terrence and Gail Griffin
 Peter L. and Terry E. Osborne
 Perry O. and Nancy G. Perry
 David Whitlock

BENEFACTORS
 Jack A. and Rebecca Benaroya
 Brian E. and Lynn M. Gough
 The Estate of Warren Werby
 Alison R. Wyckoff Milman and Glen S. Milman

University of Washington / Seattle USA

School of Art

ARTIFACTS Autumn 2005

University of Washington
 Box 353440
 Seattle, Washington 98195-3440

address service requested
 06-0412

Circulation: 2,000 UW School of Art parents, alumni and donors

Non-Profit Organization
 US Postage
 PAID
 Seattle, Washington
 Permit 62

Alumni notes

We want to hear from you! Send the latest news about your research, publication and/or art to alumninotes@art.washington.edu

Alfredo Arreguin '87, '89 showed his work in a one person show titled *Patterns of the Celestial* Gallery at Linda Hodges Gallery, Seattle, from 07 - 30 July 2005. His work also was featured at the University of Puget Sound's Kirtledge Gallery, Tacoma, 14 February - 11 March 2005.

Shannon Benine '03 was accepted to graduate school at the University of Illinois, Chicago, with a full scholarship.

Julie Blakemore '78 exhibited her latest work in a one person show at the Burien Arts Gallery, Burien, WA, Seattle, from January to March 2005.

Jaunita Brautacht '85 exhibited drawings at Art Center Gallery, Seattle Pacific University, in a solo show titled *one/another*, 13 February - 13 March 2005. Her work was included in Fountainhead Gallery's annual exhibit titled *Linkages: Human Figure 2005*. Read more about Madeline Georgette's work in a solo show titled *one/another*, 13 February - 13 March 2005.

Vernmont Studio Center residency, was shown in a solo show at Bus Stop Espresso, Seattle, 10 November - 10 December 2004.

Alan Brink '81 has built a studio/gallery with his wife, Jane, which they use to teach classes and expand and sell their artwork. Alan works in graphic arts and painting and Jane works with ceramics and textiles.

Karen Bush '85 was selected to participate in the Artists Council's Annual National Joint Exhibition, 24 February - 27 March 2005, Palm Springs Desert Museum, Palm Springs, CA.

Phi Carrizzi '82 received a Faculty Merit Award for his teaching, research and service for the second year in a row from Kendall College of Art and Design where he is an Assistant Professor and Chair of the Aleese Metals/Jewelry Design Program. He also has established a scholarship in the name of his brother, Brian, for outstanding Metals/Jewelry Design majors at Kendall. His new furniture series, called *VERGE*, was featured on the cover of *MetalSmith* magazine's 2005 Exhibition in Print issue. Additionally, his new rapid prototyped bracelets were exhibited in two regional shows this past spring. Phi's work can be viewed at <http://www.optivlevers.com>.

Fina Daschava '88 had a solo exhibition at the Utah Museum of Fine Arts from January to March 2005 titled *in transit*; she also had a solo exhibit at Gallery One, Ellensburg, WA, from March to May 2005 titled *Erasing Memories*. She has accepted a position as Assistant Professor at Central Washington University, Ellensburg, WA.

Jan Cartier '84 exhibited her new paintings in *Erasing at the Elizabeth Leach Gallery*, Portland, OR, during April 2005.

Nell Chewherry '81 is an Assistant Professor at Zayed University, Dubai, United Arab Emirates (UAE). He was given the first Garry B Fritz Imagination Award by the Society for Photography Education in March 2005. This award is granted annually to an artist presenting for the first time as an imagemaker at the national conference.

Kim Collier '82 has been appointed Guest Professor in Media at the University of Applied Sciences, Schwabisch Hall, Germany. This year she also was a nominee for the Rockefeller Foundation Film & Video Award.

Robert Connell '70 has his artwork included in a new book, *New American Paintings*, published by the Open Studios Press, Boston, MA.

Claire Cowie '98 was the recipient of a 2005 Pollock-Krasner Grant. She also exhibited her work in a show titled *Village at the Elizabeth Leach Gallery*, Portland, OR, during February 2005 and *Water, Paper, Pigment at the Art Gym*, University of Oregon, 01 January - 17 February 2005.

Andrew Daly '04 exhibited his recent work at the Greg Kucera Gallery, Seattle, from 19 May - 25 June 2005. The show was reviewed in the 03 June 2005 issue of the *Seattle Times*.

Jesse DeBelle '83 debuted his new furniture line called *Modern Object*. His *xlounge* design was recently featured in the *New York Times* Escape Edition (May 2005). Read more about Modern Object at <http://www.momodern.com>.

Dennis Evans '73, '75 has completed a commission for the five Carnegie Libraries in the City of Seattle. The commission consisted of ten paintings based on the theme of the Seven Liberal Arts. The Carnegie Libraries are in West Seattle, Queen Anne, the University District, Fremont, and Greenlake.

Karla Frazier '82 had her work included in *Zoo Project: Art through Collaboration*, sponsored by SPAC (Sand Point Arts and Cultural Exchange) and exhibited at Sand Point Building 30, 03 - 06 March 2005.

Lu Frey '82 was hired at Centralia College, Centralia, WA, as an Assistant Professor of Art, and she begins teaching this autumn.

Allan Fulla '80 had a solo show at the William Traver Gallery, Seattle, in May 2005. Recent shows include a November 2004 exhibit at George Billis Gallery, Los Angeles, and a show titled *Patterned Light Dots at the William Traver Gallery*, Tacoma, 12 February - 06 March 2005.

Russell Hamilton '91 is a Professor at Zayed University, Dubai, United Arab Emirates (UAE). He is also a Professor at Wayne State University in Detroit, MI, and an Adjunct Professor at the University of Minnesota. His 2004 exhibitions include a two person show at Overground Gallery in Abu Dhabi, UAE; a faculty show at Cultural Foundation, Abu Dhabi, UAE; and a faculty show at Courtyard Gallery, Dubai, UAE.

Jeanne Hammer '78 exhibited her work in *Midwest Vision at the Grover/Thurston Gallery*, Seattle, during July 2005.

Tom Heilsson '88 showed a video installation *New Age Old*, an exhibit at the UW Sand Point Center, Seattle, that ran 03 - 19 June 2005. Additionally, he will complete the design of a publication titled *SOIL: Artist-Run Gallery 1999-2005* documenting the collective's ten-year history. The book is scheduled to be released in September 2005.

Kevin Hotz '89 has been teaching in the Digital Media program at the University of Georgia, Athens, GA, and has exhibited video, audio performance and photography work in twenty solo, group, juried, and online exhibitions in the past year and a half. He most recently exhibited an interactive sound argument for the show *Embedded: Living with Technology at the Athens Institute for Contemporary Art (ATICA)* in Athens, GA, from 09 April - 29 May 2005. His work can be viewed at <http://www.orangemancreative.com>.

Mary Iverson '88, '02 exhibited her work at the Davidson Galleries, Seattle, 03 June - 02 July 2005.

Erin Johnson '91 won the Santa Fe Prize for Photography in April 2005. More information is available at <http://www.santafecenterforphotography.org/programs.cfm?p=Prize2005>.

Ayesha Khan '83 exhibited her work at Gallery 100, Seattle, in January 2005. She also was the artist on invitation at the UW's Odegaard Library in January and February 2005.

Dianne Korsberg '61 exhibited her recent work at the Elizabeth Leach Gallery, Portland, OR, in an exhibition of its occurrence, 2003-2005, 03 March - 02 April 2005.

Carolyn Krieg '88 was commissioned by Eastern Washington University Press to produce the artwork for a print edition of their "Get Lit!" festival in April 2005. She will have an exhibition titled *Quitlapava* at Lorinda Knight Gallery, Spokane, in April 2005. For the month of June 2004 she was awarded an artist residency at a remote lighthouse, Cape Pine, Newfoundland, Additionally, the United States Embassy in Rangoon is showing her work through 2006.

Melissa Lankar '84 was accepted into the graduate design program at the Rhode Island School of Design.

Isaac Layman '04 had a solo exhibition at Crawl Space Gallery, Seattle, from 16 April through 15 May 2005.

Margie Livingston '89 had her 07 April - 14 May 2005 show at Greg Kucera Gallery, Seattle, reviewed by Gary Fain on KUOW-FM.

Allison March '04 had a solo exhibition titled *Sensational Domestic* at Zeitgeist, Seattle. She also is teaching Art 243 (Intermediate Photography: Color) in the SoK during Summer Quarter 2005.

Jan Mandel '98 received a Maryland State Artist Grant and was awarded First Place in Metals by the North Eastern Corridor Creative Craft Council.

Ann Mathers '84 had a solo exhibition at Crawl Space Gallery, Seattle, in March 2005.

Saya Muriyasa '91 presented her new work in a show titled *LampLight Lens Gathering at Platform Gallery*, Kamata, 31 March - 07 May 2005.

Yuki Nakamura '91 participated in the *La Napoule Art Fair* solo artist-in-residence program in France from January to March 2004. She completed a collaborative public art project with Joe Miller titled "Seeded Floor" at the Tacoma Convention Center, November 2004. She received a *Joshihi Initiative Award for Excellent Work and Research* from Joshibi University of Art and Design, Tokyo, December 2004. Her work titled *Flows* was in *Bulking*, Seattle, Gifts in Honor of the Northwest Art Collection at the Tacoma Art Museum. She also participated in the Novara Art Center's artist-in-residence program in Italy and presented a new work at NAC (Norwich Arts Council) Gallery, Norwich, CT, in April 2005.

Moah Overly '91 exhibited his work from 26 May - 26 June 2005 at The Blue Door Gallery, Seattle.

Kristan Ramirez '84 had an exhibit titled *Irrational Exuberance* at Crawl Space Gallery, Seattle, from 15 January through 13 February 2005. She had a week-long residency at the Hamilton Wood Type Museum in Two Rivers, WI, during August 2005. In December 2005 she will curate an exhibit titled *Catalog* at the SOIL Art Gallery, Seattle, and in January 2006 she will have a solo show at 4Culture Gallery, Seattle.

Debbie Reichard '02 was awarded a grant from the New Jersey State Council on the Arts and was included in a two-person show at PS 122 Gallery in NYC in February 2005. Her work also was part of *The Silopcast Object*, a group exhibition traveling to the Dallas International Airport. She completed a two-month residency at Sculpture Space, Uica, NY, in January 2004.

Phil Reach '88 had his ceramics exhibited at the University of Puget Sound's Kirtledge Gallery, Tacoma, from 14 February - 11 March 2005.

Tim Roda '84 began working in a free studio in New York City for a year starting on 01 September 2005. He got the studio through K/S Soap Program, which is funded by the Marie Walsh Sharpe Foundation. He has three exhibits of his work scheduled: Eastern Washington University, September 2005; Greg Kucera Gallery, January 2006; and The Ohio State University, March 2006.

Alyson Shelz '91 had a 40' sculptural work titled *The Shape of Space* purchased by The School for Visual Arts, New York, but he decided to postpone starting his graduate studies for a year. He had a solo show at Crawl Space Gallery, Seattle, from 21 May through 12 June 2005.

Caroline Snowe '03 is having a book published this autumn with the title *Classic Houses of Seattle: High Style to Vernacular, 1870-1950*. More information is available at <http://www.tbmypress.com/books/sbn.cfm/0-88192-71-71>.

Linda Thomas '85, '95 has been selected as the 2004-05 recipient of the *Award for Teaching Excellence for Arts, Writing and Humanities Programs* by UW Extension. She has been teaching at UW Educational Outreach since 1997 and was instrumental in forming the Drawing and Painting certificate programs within the Arts and Humanities Division. She also teaches art and art history at Bellevue Community College and Seattle Central Community College.

Mary Therrell '80 had written work, "Triam in Mudtime," included in the ezine, *The Tactile Mind Weekly* '91, 10 February 2005. She also was awarded the First Annual Linwood Smith Short Book prize for work of fiction, "Lost Atlantis." For more information, go to <http://www.thetactilemind.com>.

Debra Van Tuijnen '77 exhibited her work at Butters Gallery Ltd, Portland, OR, in a show titled *Washed by Compassion and Light* during July 2005.

Sheryl Westergren '86 exhibited several paintings from her *Inside a Leaf* series at the Seattle Art Museum's Rental/Sales Gallery in May 2005. Sheryl's work can be viewed at <http://www.sherylwestergren.com>.

Laura Wright '04 had a show titled *Bugs & Jugs in the Lower Level Gallery at the Capitol Hill Arts Center*, Seattle, during May 2005. She also has worked as a teacher and project coordinator for Youth in Focus, Seattle (<http://www.youthinfocus.org>).

Robert Yoder '87 will exhibit his work in October 2005 at the Froelick Gallery, Portland, OR. Please contact the Froelick Gallery for more information: <http://www.froelickgallery.com>.

Janie Bollenbach '02 and Alden Mason '42, '41 *Professor Emeritus, Painting + Drawing exhibited their work in Studies Part 1: Ballard at the Seattle Art Museum's Rental/Sales Gallery* during July 2005. The exhibit was the first in a series that focuses attention on Seattle neighborhoods that have thriving arts scenes, with an abundance of artists' studios and other spaces where arts flourish.

A recent book, *1000 Rings: Inspiring Adornments for the Hand*, published by Lark Books, includes work by a number of alumni from the SoA Metals Program: Jana Brick '98, Jaisy Hanan '02, Jodi Johnson '88, Nanette Jolly '94, Joanna Koh '94, Hedine Kariya '73, Shava Lawson '01, Jina Pankowsky '93, Maria Phillips '97, and Lori Talcott '98.

Several SoA alumni and one staff person participated in the show titled *Paper Politics: An Exhibition of Politically and Socially Engaged Printmaking* sponsored by Seattle Print Arts and mounted at Pinney Center Gallery, Seattle, in April 2005: Barbara Beach '82, David Ferreri '97, Randall Hutchinson '95, Lynea Kleiman '92, Emily Pastast Mannion '05, Sally Schuch '90, and Larry Summers *Instructional Technician, Painting + Printmaking*.

The following SoA alumni were honored in *A Decade of Excellence: Celebrating the Needy Artist Fellowship* at the Tacoma Art Museum from 29 January through 05 June 2005: Donabelle Cass '97, Claire Cowie '98, Claudia Fitch '78, and Mary Ann Paters '74. Also included in the exhibit was Michael Spafford *Professor Emeritus, Painting + Drawing*.

The Gordon Woodside/John Braseth Gallery, Seattle, featured the work of the following alumni in its Spring Salon show, June 2005: Benita Evans '73, '71, Paul Havas '65, William Ingham '72, Gene Gentry McMahon '78, '76, and Nancy Mee '75.

Tom Heilsson '88 and Ben Hinckhoff *MFA candidate, Ceramics* collaborated on a video installation for the 2005 Coupling exhibition titled *Coupling III: Closest Point of Union*, which showed at the Orchard and Contemporary Art, Seattle, from 30 April through 11 May 2005.

Deborah Herrrel '88 and Lynda K. Rockwood '78 have been selected as 2005 Hauberg Fellows at Pichuck Glass School. More detailed information can be found at <http://www.pichuck.com/archives/2005/hauberg>.

Kathleen Rabel '70, Barbara Robertson '78, Francesca Samsi '85, and Mikie Watanabe '84 exhibited their latest work at the Davidson Galleries, Seattle, during July 2005.

Ruth Marie Tomlinson '80 and Laura Wright '04 were part of a three person show titled *Stitched* at G. Gibson Gallery, Seattle, during June 2005.

SUPPORT! THE UW SCHOOL OF ART

SWA Newsletter Staff
 Edited by Jeanette C. Mills
 Written by Lynn Bazarian, Judi Clark, Mary Hu, Jeanette Mills, Jamie Walker
 Photographs by Jeanette Mills, Lori Moskal, Phil Schwab

Contact: Lynn Bazarian
 UW School of Art
 Box 353440 in
 Seattle, Washington 98195-3440
 Telephone: 206.685.2442
 email: bazarian@u.washington.edu